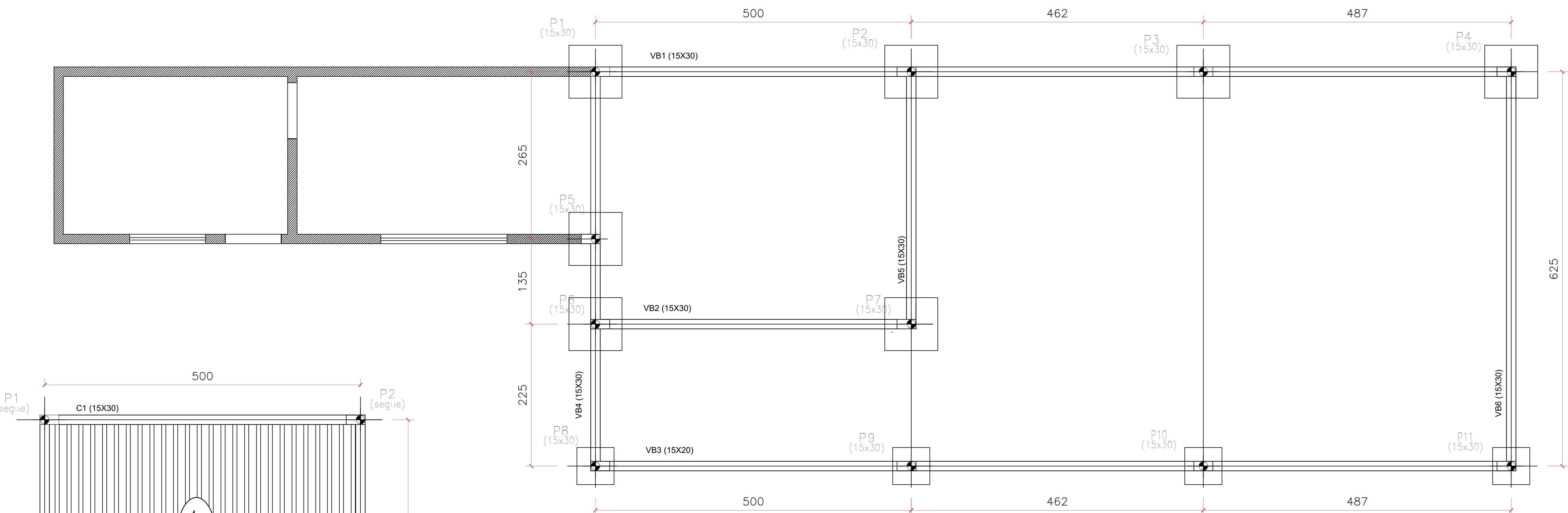
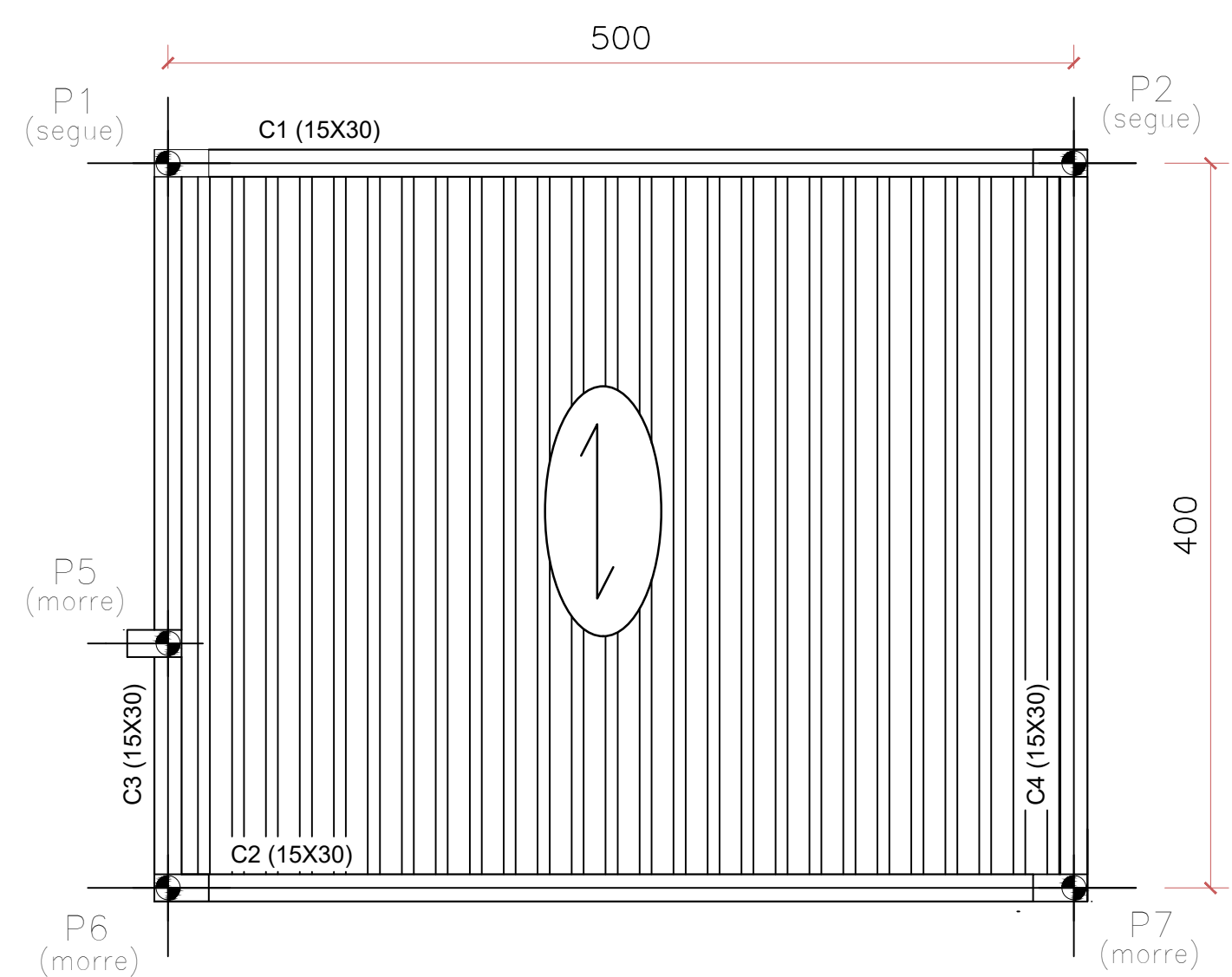


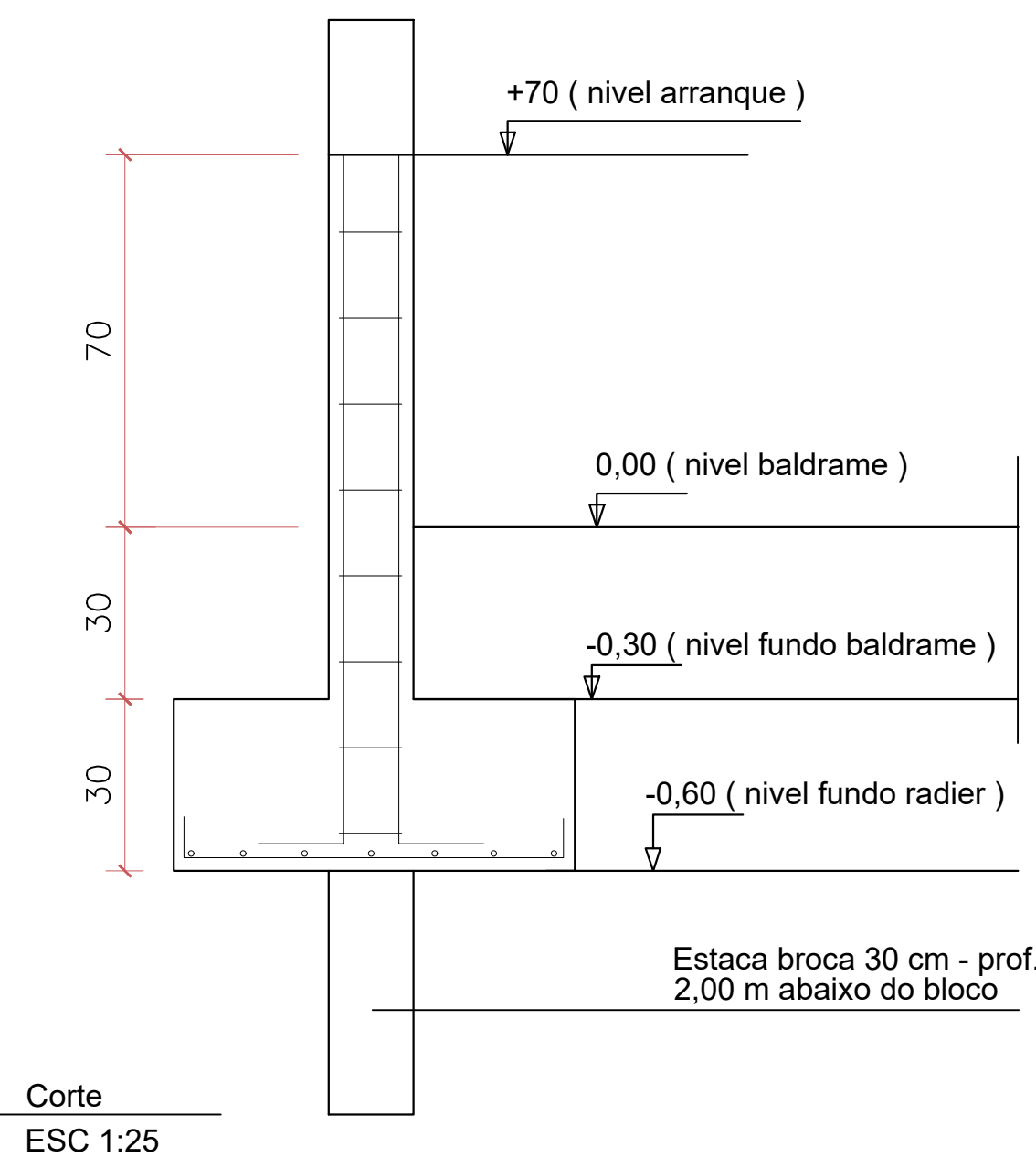
PLANTA DE LOCAÇÃO ESTACAS
ESCALA 1:50



PLANTA DE LOCAÇÃO BALDRAMES
ESCALA 1:50

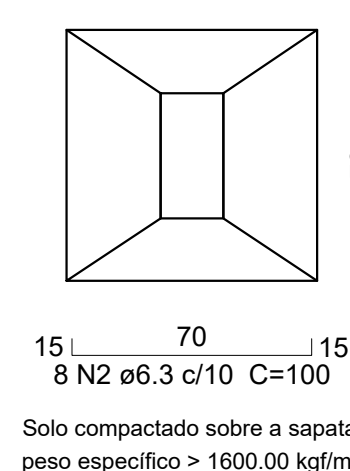
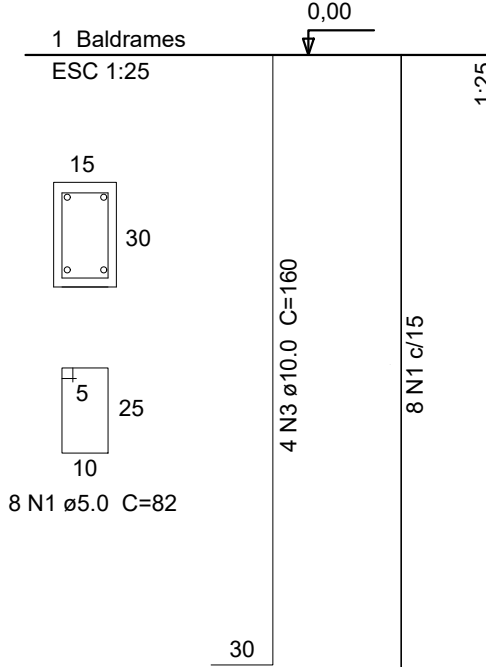


PLANTA DE FORMA DE LAJE
ESCALA 1:50



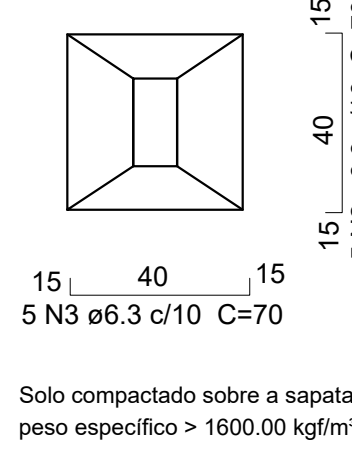
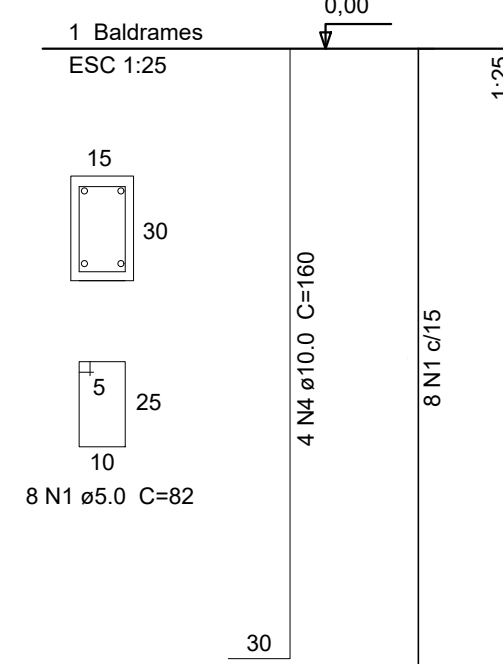
Corte
ESC 1:25

P1-P2-P3-P4-P5-P6-P7



Solo compactado sobre a sapata
peso específico > 1600.00 kg/m³

P8-P9-P10-P11



Solo compactado sobre a sapata
peso específico > 1600.00 kg/m³

Elemento	Pos.	Diam.	Q.	Esquema (cm)	Comp. (cm)	Total (cm)	CA-50 (kg)	CA-60 (kg)
B1-2-3-4-5-6 7-8-9-10-11 arranques	1	ø 5	88		80	7040		10,84
	2	ø 6,3	112		100	11200	27,44	
	3	ø 6,3	64		70	4480	10,97	
	4	ø 10,0	44		160	7040	43,43	
					total + 10%	90,02	11,92	

Elemento	Pos.	Diam.	Q.	Esquema (cm)	Comp. (cm)	Total (cm)	CA-50 (kg)	CA-60 (kg)
P1-2-3-4	1	ø 5	112		80	8960		13,79
	2	ø 10,0	16		430	6880	42,44	
					total + 10%	46,69	15,17	

Elemento	Pos.	Diam.	Q.	Esquema (cm)	Comp. (cm)	Total (cm)	CA-50 (kg)	CA-60 (kg)
P5-6-7	1	ø 5	60		80	4800		7,39
	2	ø 10,0	12		312	3744	23,10	
					total + 10%	25,41	8,13	

Elemento	Pos.	Diam.	Q.	Esquema (cm)	Comp. (cm)	Total (cm)	CA-50 (kg)	CA-60 (kg)
P8-9-10-11	1	ø 5	64		80	5120		7,88
	2	ø 10,0	16		250	4000	24,68	
					total + 10%	27,14	8,67	

C1	1	ø 5	30		80	2400		3,69
	2	ø 8	2		550	1100	4,34	
	3	ø 8	2		510	1020	4,03	

C2	1	ø 5	30		80	2400		3,69
	2	ø 8	2		550	1100	4,34	
	3	ø 8	2		510	1020	4,03	

C3=C4	1	ø 5	46		80	2400		3,69
	2	ø 8	4		450	1800	7,11	
	3	ø 8	4		410	1640	6,47	

C3=C4	1	ø 5	89		60	5340		8,22
	2	ø 6,3	2		1490	2980	7,30	
	3	ø 6,3	2		1460	2920	7,15	

Elemento	Pos.	Diam.	Q.	Esquema (cm)	Comp. (cm)	Total (cm)	CA-50 (kg)	CA-60 (kg)
VB1	1	ø 5	89		80	7120		10,96
	2	ø 8,0	2		1500	3600	14,22	
	3	ø 10,0	2		1480	2920	18,01	

VB2	1	ø 5	30		80	2400		3,70
	2	ø 8,0	2		558	1116	4,41	
	3	ø 10,0	2		518	1038	6,40	

VB3	1	ø 5	89		60	5340		8,22
	2	ø 6,3	2		1490	2980	7,30	
	3	ø 6,3	2		1480	2920	7,15	

VB4	1	ø 5	25		60	1500		2,31
	2	ø 6,3	2		400	800	1,96	
	3	ø 6,3	2		370	740	1,81	

VB5	1	ø 5	25		80	2000		3,08
	2	ø 8	2		440	880	3,47	
	3	ø 10	2		410	820	3,24	

VB6	1	ø 5	40		60	2400		3,69
	2	ø 6,3	2		665	1330	3,26	
	3	ø 6,3	2		635	1270	3,11	

RESUMO FERRAGEM	Bloco (apo)	compr. (m)	Barra (12 m)	peso (kg) Total + 10%
	ø 5,0	650,90	54	100,24
	ø 6,3	347,75	29	85,20
	ø 8,0	145,97	12	57,66

PROJETO ESTRUTURAL

BAR- Estadio Mun, Joaquim Alves Belo

Prop. Pref. Mun. Estrela do Indaiá MG

RT - Ricardo Faustini Poltronieri - CREA 78407 D/MG

BAR

Planta de locação, bandrame
Det pilares, blocos, cintas

Escala: indicadas

Desenho:

Área: 117,74 m²

Data: 01/12/2025

Unidade: cm

DESENHO

01

FOLHA

01/02